



Antelope Horn

Newsletter of the Kern-Antelope Historical Society, Inc.
Member of the Conference of California Historical Societies
PO Box 1255 Rosamond, CA 93560
October, 2022

Meetings:

Regular Meetings:

- 2nd Thursday of the month (except July, August); 5:30 pm.
- Wayside Chapel Community Church - 2584 Felsite Ave, Rosamond, CA

Board Meetings:

- 4th Thursday of the month as needed; 4 pm.; all are welcome, email for directions to location.

Hello to all our Kern Antelope Historical Society Members and Friends.

- What: **Randy Retzke, Guest Speaker**
- When: **Thursday, October 13th** (Second Thursday as usual)
- Time: **5:30 pm**
- Location: **Wayside Chapel Breezeway**

you for your continued interest in and support of KAHS.
WEBSITE: www.kahs1959.org **EMAIL:** info@kahs1959.org
FACEBOOK: www.facebook.com/KAHS1959/

Son of North China Marine POW to Speak to Kern Antelope Historical Society

The Kern Antelope Historical Society is pleased to welcome Randy Retzke as our speaker for the October meeting. Randy attended school here in Rosamond

and has worked in the area for many years, including his employment at Sears in Lancaster and operating his own business - R F Retzke General Contractor. But Randy will be mostly sharing information about his dad, Harold I. Retzke, who was a North China Marine POW during World War II. These prisoners, captured right after the Japanese bombed Pearl Harbor, December 7, 1941, were held from December of 1941 to September of 1945 - the end of the war. They were held in China and later in Japan. Also, come to learn what happened to Harold's wife (and his son, Randy, who was born while she was in a separate concentration camp). Harold and his family came to Rosamond in 1955. You will want to hear Randy and his dad's story!



Randy Retzke - photos this page from Chavonne Sladek.



Left - Harold Retzke & unidentified soldier, dated 1945.





Please notice: if you are receiving a hardcopy (black and white copy) of this newsletter and would like to enjoy it in color, it is available at our website: www.kahs1959.org.

This article, from https://en.wikipedia.org/wiki/China_Marines, will give a little background information about the North China Marines.

China Marines

The term China Marines, originally referred to the United States Marines of the 4th Marine Regiment, who were stationed in Shanghai, China from 1927 to 1941 to protect American citizens and their property in the Shanghai International Settlement, during the Chinese Revolution and the Second Sino-Japanese War. Those Marines stationed at the embassy in Peking and the consulate in Tientsin referred to themselves as North China Marines.[1]

Due to the cheap labor available, China Marines lived a relatively comfortable lifestyle, with each squad able to hire Chinese men to do their cleaning and run their errands. This, plus the inexpensive goods available on the local market, made an assignment to the China Marines highly coveted.

Most of the China Marines were withdrawn in November 1941, but the North China Marines in Peking and Tientsin were scheduled to be withdrawn on December 10. (All weapons and ammunition except rifles and pistols had been crated and shipped by rail to the embarkation port.) However, Imperial Japan attacked the United States on December 7, and the Marine Embassy guards, plus a fourteen-man Naval medical detachment, a total of 203 men, were captured and held as slave labor until the war's end in August 1945. A 204th man, a retired officer who had been living in Peking and recalled to duty, was immediately released. He continued living in Peking until he was included in the roundup of civilians and sent to the Weihsien civilian internment camp in March 1943. He was returned to the US on the exchange ship Teia Maru in September 1943. The last commander of the China Marines was Colonel William W. Ashurst.[2]

With the rapid expansion of the Marine Corps during World War II and the capture of the rest of the 4th Marine Regiment at Corregidor, the surviving China Marines were few in number and highly regarded.

After Japan's surrender, the 1st and 6th Marine Divisions, also known as China Marines, were sent to occupy northern China from 1945 to 1948.

Below—Harold is in the top row, 3rd from right.



Above - Record of Harold's POW Medal

[Source: <http://www.northchinamarines.com/id25.htm>. jlw: not clear where or when the photo was taken.]
 Top row: Bernard F. Kelly, William H. Boyden, Francis L. Plog, Robert L. Armstrong (?), Norman R. Estep, John D. Pitner, Steve A. Salay or James Wilson, Harold I. Retzke, Frank J. Novak, Raymond E. Smith. Middle: Jimmie L. Stewart, Edgar A. Croteau, Harold (Doc) Hoffman, Charles W. Parr (?), Norman Berg or Martin Gatewood, Kenneth W. Davis, Fernando C. Rodriguez or Antonio Leon, Gerald A. Newhouse, Michael J. Schick, Edward (Moose) Kirkpatrick. Front: Jack Davis, _____, John H. Ellison, Herman Davis, Walter E. Freiberger, Danny Walmer, Morris F. Haugo, Frank (Dutch) Miller, John (Tex) Castleton, Roy A. Dobson, Herman Wolf. Dog is Ergo. *The Fall of Shanghai* by Noel Barber describes Woosung as such: "In winter sleet and snow whistled round every corner, and then fogs, drifting in from the sea, chilled you to the bone ... Yet if the winter was long and cruel, the summer was even worse; for then came the heat..." Wake Island civilian John O. Young said about Woosung "Not enough food, sickness, beatings were all part of prison life. If one would see a cute puppy or kitten we would not think of how cute they were, but could we catch them to eat."



Please notice: if you are receiving a hardcopy (black and white copy) of this newsletter and would like to enjoy it in color, it is available at our website: www.kahs1959.org.

Antelope Valley PIONEERS THE SETTLE FAMILY

[Notes in brackets and italicized are the comments of jlw]

[Portions of this article appeared in a previous edition of the Antelope Horn. The KAHS book, *Antelope Valley PIONEERS*, was published in 1984. The references to family members currently living in the Antelope Valley were as of that year. Many are no longer living.]

The first Settle to come to California that was related to the Antelope Valley Settle's was Marcus George Settle and family. They came to the Southern California area in 1870, first to San Diego and then to Norwalk. They were members of a wagon train that left Sulphur Springs, Texas in May of 1870 and arrived in California in December. The Shrode diary of this wagon train was published in the March 1944 quarterly edition of the Historical Society of Southern California. *[jlw: recent newspaper reference to the Shrode diary - <https://www.pasadenastarnews.com/2015/11/01/pasadena-history-maria-shrode-duartean-by-way-of-texas/>.]* One of the sons of this family was Newton T. Settle. About the same time, the Titchenal family moved to the Santa Ana area from Northern California, bringing a daughter Martha Jane, who was born in Port Costa, California in 1860. Martha Jane and Newton T. were married in Santa Ana in 1875. To this couple was born a son, William B. Settle, in Norwalk in 1877.

Another pioneer was A. I. Allen who came to California in the 1850's during the big California gold rush. He came from St. Lawrence County in upper New York State and like many others hoped to strike it rich near the small town of La Porte. When the Civil War broke out, he enlisted in Co. F. First Regiment of the Union Army. He took his training at Camp Latham near Santa Monica and on one of his training trips went to Fort Tejon near Lebec. When he finished his training, his company was ordered to march to New Mexico to help keep order there. While he was there, he received a knee injury from an Indian arrow. After his discharge at the end of the conflict, he headed back to his birth place in New York State. On September 10, 1867 he married Sarah Barrett and on February 6, 1879 their fifth child, Marion Ruth Allen, was born. A year later A. I. moved his family to Santa Paula, California to escape the cold New York winters.

When a young man William B. Settle moved to Santa Paula in Ventura county shortly before 1900, he met Marion Ruth Allen and they were married in that city in 1900. To this couple were born eleven children with ten surviving. They were Ruth, Maude, William B., Jr., Earle, Irving, Glen, Mildred, Marcus, Alan, Robert and Jack. (Alene passed away soon after birth and is buried in the old Palmdale cemetery.)

William B. Sr. went to work for the Southern Pacific Railroad Co. shortly after his marriage in 1900. After short stays at Piru, Burbank, Castaic and later Lone Pine, a good position opened up for his employment and in 1909 moved to Palmdale, California in the Antelope Valley. Most of the Settle children attended school for the next several years in Palmdale, later moving to Lancaster. Seven of them graduated from the Antelope Valley High School.

Mom and Dad" Settle, as they were known to so many, did not have much time for outside activities while raising their ten children although Mom helped on many school projects while Dad was a supporter of many Antelope Valley athletic teams on which his sons were active.



The first buildings at Antelope Valley Union High School, shortly after 1915. Note the Joshua tree on right. The school yearbook "Yucca" received its name from this tree. Photo courtesy of the late Alice E. Burton, who donated this copy to the Gold Camp Museum collection.



Please notice: if you are receiving a hardcopy (black and white copy) of this newsletter and would like to enjoy it in color, it is available at our website: www.kahs1959.org.

The Settle boys played on many grammar school, high school and Lancaster town teams. The famous Lancaster All Stars Basketball team, coached by Whit Carter, had three Settle boys playing: Mark, Irving (Sock) and Glen. The team played several league games (one in Lancaster) against the Universal All Stars. They competed again in a tournament, which was won by Universal. Universal eventually became the National Champions and the U.S. entry in the first Basketball competition in the Olympic Games in 1936, winning the Gold Medal for the United States. Later the Lancaster All Stars defeated the Pasadena Majors who at the time were the Pacific Coast Champions. The Lancaster All Star team played many of the top traveling teams from throughout the U.S. and Mexico in the old A.V. High School gym.



Photo of Whit Carter's famous Lancaster All Star basketball team in the early 1930's. This team earned a reputation as one of the strongest quintets on the Pacific Coast when they defeated the Pasadena Majors who were Pacific Coast A.A.U. Champions at that time. In 1936 the All Stars were in the Southern California Major A.A.U. League which included the Universal Picture team, which went on to become National A.A.U. Champions and then later to become the Olympic Games Champions. Mr. Carter devoted much of his early life to help and encourage the young men of Antelope Valley in all phases of sports and to encourage them to further their education. Frank Rutledge in his memories mentions Whit Carter, top row far right, Morgan "Red" Trammel, front row fourth from left, Glen Settle, back row second from left and Irving "Sock" Settle, front row center. Forrest Godde, front row far right, is a successful rancher today and still lives in Antelope Valley. Photo furnished by Don Hatfield Jr.

the 1930's three of the Settle boys along with partner Whit Carter owned and managed grocery stores: Earle at Roosevelt [jlw: area on the east side of Lancaster], William (Bill) at Lancaster and Glen at Rosamond. The partnership became the Antelope Valley Distributing Co. with Whit Carter as a stock holder and installed the first soft drink bottling plant in Antelope Valley. Three of the Settle children, Ruth, Maude and Glen, still live in the Antelope Valley. Ruth Forquers' son Edward White is the Appliance Manager at K-Mart in Lancaster. He is married to Betty Ritter, descendant of an early day family. They have a daughter Laurie. Ed is very active in Masons and Shrine. Ruth's daughter Audrey Mae Forquer is married to Ronald Carter and they have 3 children living in Antelope Valley. (See Carter family history). [jlw: this refers to another article in Antelope Valley Pioneers.]

Maude Mumaw Belfield has two daughters, Dorothy Mumaw Parker Darling (Mrs Hal) and Melanie Mumaw Evans (Mrs Harold) who were born and are still living in Lancaster. One of Dorothy's sons, Lin Parker III is a coach at Cal Tech in Pasadena, but maintains his home in Lancaster and commutes daily. Lin was raised in Lancaster and graduated from A.V.J.H.S. and A.V. College. He and his wife, the former Karen Taylor, have 3 children, Boyd Parker IV, Mathew and Teresa, all born in Lancaster and presently attending Lancaster schools. Though Melazine and Harold Evans have 3 sons, only one, Tom Evans still lives in Antelope Valley. In addition Maude has 3 other grandchildren living in Antelope Valley. They are Lisa Mumaw Llarena, Eric and Kristi Mumaw.

Glen, mentioned earlier, served in the U.S. Navy as a Physical Instructor (1942-1945). He resumed his work at the A.V. Distributing Co. and immediately resumed his interest in athletics by coaching several A.V. championship A.A.U. teams both in basketball and softball.

In 1948, he married Dorene Burton and after a short career at Burton's Gold Mine they opened the Tropico Gold Mine and Camp near Rosamond for tours, which they operated for 22 years.

Glen has compiled and written numerous books and articles on Antelope Valley and Desert history. He has given many (now over 600) historical slide presentations to groups and organizations. Through those activities, appearances on Television and radio shows, he has become well known to California and Antelope Valley historians. Glen was a member of the California Sate Landmark and Historical Resources Commission for ten years, (1967-1977) having

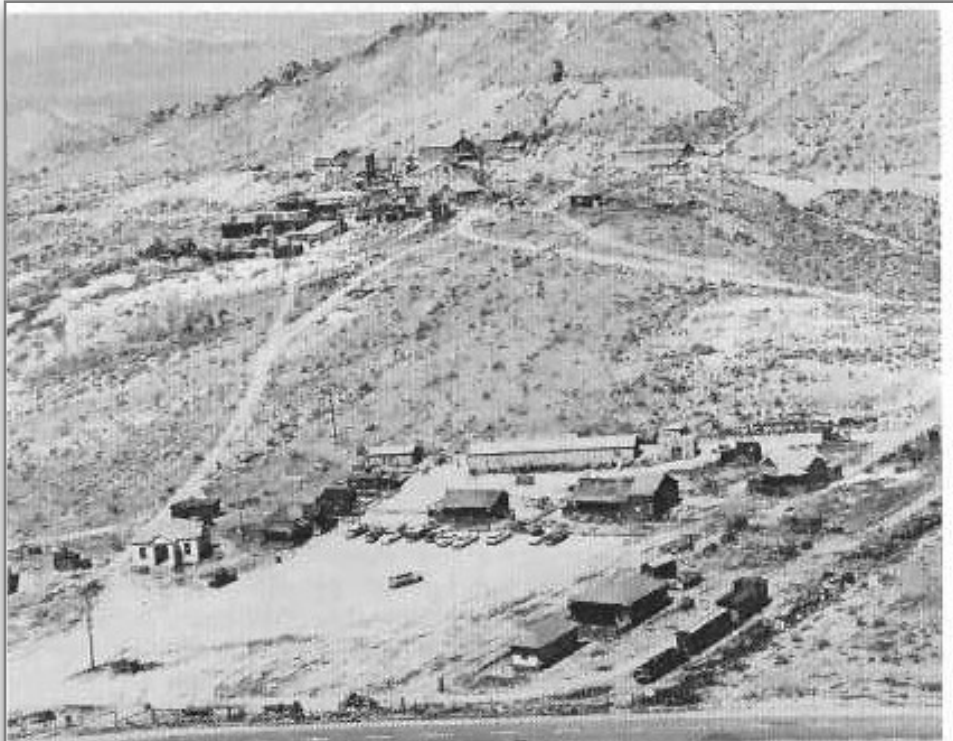


At the 1998 KAHS meeting, these former presidents are pictured: Top row, left to right, Glen Settle, Clint Cole, Dick Ballinger, Les Harrington. Bottom row, Dorene B. Settle, Grace Pickus and Mildred Brackett.



Please notice: if you are receiving a hardcopy (black and white copy) of this newsletter and would like to enjoy it in color, it is available at our website: www.kahs1959.org.

been appointed by Governor Ronald Reagan. He has also found time to be very active in Community affairs such as Chamber of Commerce, Mining Groups, Board of Trade, A.V. College Board and many others. He has received many honors for these contributions. In 1966 Glen was appointed to the Kern County Centennial Commission by Supervisor John Holt. One of the projects, headed by him, was to gather and preserve materials of the period which were sealed in a large tunnel at Tropic Mine, not to be opened until the year 2866. This Time Tunnel is listed in the Guinness Book of World Records as the World's largest Time Capsule. (Page 374 of the 1982-83 edition). He organized and was charter president of the Kern Antelope Historical Society and founded the World Championship Gold Panning Contest.



Tropico Gold Mine and Mill on historic Tropic Hill. Gold Camp, below mine, has many hundreds of early day Antelope Valley photos and relics on display for visitors to see. Building on extreme left - is home of the Kern Antelope Historical Society Museum.



Now semi-retired he and his wife live on the west end of Burton's Tropic Hill.

As stated in the article, Settles retired to their home on Tropic Hill, just to the left of the mine and mill (and just out of view in the photo above) where they could look out on the Antelope Valley, and also the Tropic Gold Camp below the mill. Here they operated the popular Tropic Gold Mine Tours and the Kern Antelope Historical Society ran their KAHS Museum in the old John Munz ranch house (left) which was relocated to the Gold Camp in the early 1960's. Members of the Munz family attended the dedication of the museum. The KAHS held their meetings at Tropic Gold Camp, also.

New Member for 2022-2023 - We are very happy to have you join us. Welcome to the KAHS:
Faye Hall



Please notice: if you are receiving a hardcopy (black and white copy) of this newsletter and would like to enjoy it in color, it is available at our website: www.kahs1959.org.

Website: www.kahs1959.org

Email: info@kahs1959.org

Please visit the website for more information about Antelope Valley history. Copies of recent newsletters are available, as well as other information. The first online KAHS book is also available. *Glimpse of the Prehistory of Antelope Valley*, by Stuart Glennan, is described as "Archaeological Investigations at the Sweetser site".



Here is the link for the Kern Antelope Historical Society webpage that will take you straight to the Video section: <http://kahs1959.org/Videos/videos.html>. Check it out to see all of our available videos.



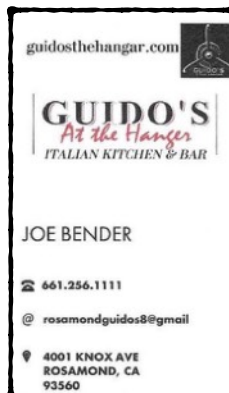
The new year for KAHS started in June. If you haven't yet paid your dues, this will be your last newsletter. Please consider renewing your subscription to keep your membership current.

Kern Antelope Historical Society - Membership Application

Mail to: Kern Antelope Historical Society; PO Box 1255, Rosamond, CA 93560

	Type of Membership:	Dues:	Amount Paid:
Name _____	Student/Military	\$5	_____
Mail Address _____	Individual	\$15	_____
City, ST, Zip _____	Couple	\$20	_____
Phone _____	Family	\$30	_____
Email _____	Business	\$35	_____
Date _____			

- Note:**
- Club Year is June 1st through May 31st of the following year; new members, paying after February 1st, pay only half.
 - Zelle: info@kahs1959.org. You may now use the following cell number for Zelle payments, also: (661) 609-8757.



The Kern Antelope Historical Society greatly appreciates its business members. We hope you will support them and say thanks when you see them.



Please notice: if you are receiving a hardcopy (black and white copy) of this newsletter and would like to enjoy it in color, it is available at our website: www.kahs1959.org.

The Kern Antelope Historical Society greatly appreciates its business members. We hope you will support them and say thanks when you see them.

SLADE COURT SERVICES
Kern UDA 35 & PS 341

EVICTIONS & SERVING
Get Rid of BAD Guys/Gals

15874 SIERRA HWY
MOJAVE, CA 93501
661-342-0213 Michele
prplnut@aol.com
661-824-2578 Chris



THE TIRE STORE

1816 Rosamond Blvd.
Rosamond, CA 93560
(661) 256-TIRE (8473)
Fax (661) 256-8476

PRICES ARE BORN HERE AND RAISED ELSEWHERE

DAVE BRAGG & NICK ROGHAIR
Owners
ESTEBAN MARAVILLAS
Manager

www.tirestoreav.com

JOHN STICKEL

Expert AUTOMOTIVE, INC.

TAKE YOUR CAR TO THE EXPERTS

(661) 256-0405
FAX (661) 256-2060
2951 DIAMOND ST. ROSAMOND, CA 93560

Do it Best **KARLS HARDWARE**

2700 Diamond St.
Rosamond CA, 93560
Phone: (661) 256-3985
Fax: (661) 256-3932


Eric Landsgaard
President

karlsbest@sbcglobal.net

RAMON'S restaurant
A taste of Mexico

GRACIAS
THE LOPEZ FAMILY

(661) 256-4602
1431 Rosamond Blvd Ste 9 & 10
Rosamond CA 93560



Auto Pros

Smog Checks
Complete Domestic &
Foreign Automotive Repair
Also RV's & Boats
1475 Sierra Hwy.
Rosamond, CA

MARIO GUTIERREZ (661) 256-2662

Desert Breeze Enterprises

Don and Chavonne Sladek
Owners/Hosts

tel. (661) 256-4409
Rosamond, CA 93560
dbe2016@icloud.com

Contact us for help with business travel
www.airbnb.com/rooms/5571552



Fosters FREEZE

Hensley/Taylor

Rosamond Fosters Freeze
2080 Rosamond Blvd.
P.O. Box 624
Rosamond, CA 93560
(661) 256-4436



melchers construction Lic. 955132

QUALITY CONSTRUCTION · REASONABLE RATES · SINCE 1984

Gene R. Melchers
General Contractor

2654 Diamond Street · PO Box 1468 · Rosamond, CA 93560
melchersconst@sbcglobal.net

661-810-0327 · melchersconstruction.net

MAVERICK'S STEAKHOUSE

661 386-0322

REC

Rosamond Chamber of



ROBERTO'S MEXICAN FOOD

4401 Rosamond Blvd.
Suite 5 & 6
Rosamond, CA 93560

661.256.2607



For Sale by KAHS

Books - \$10 (*\$8) Each:

Here Roamed the Antelope
Bears - Borax and Gold
Along the Rails from Lancaster to Mojave
The Antelopes Left and the Settle-ers Came
In Love with Life in Lancaster (Hard Times
1927-1932)
Antelope Valley Pioneers
Castles in the Valley - Shea's Castle
A Page in the History of Antelope Valley: the Arthur
Pickus Story: His Home for Seventy Five Years
Mojave, A Rich History of Rails, Mining and Flight
Gold-Fever - 40 Years Digging Antelope Valley
History
Antelope Valley News and Views During Part of the
Great Depression 1925-1935

Video DVD - \$15: Antelope Valley Yesteryears

Maps - \$4 (*\$3): Historic Settlers Circle Map

Online Book: *Glimpse of the Prehistory of Antelope Valley*

**Members' Discount Prices in Parentheses*

2022-2023

Executive Board

Officers:

President: Gretchen Winfrey winfrey3314@yahoo.com
Vice President: Delores Julian ddjulirosa@yahoo.com
Secretary: Janet Winters poppiesrme@gmail.com
Treasurer: Kelly Gonzalez gonzakel@sbcglobal.net

Directors At-Large:

Terry Landsiedel
Joe Pauley
Chavonne Sladek

WEBSITE: www.kahs1959.org **EMAIL:** info@kahs1959.org

General Meetings:

Second Thursday of the Month, September through June
5:30 pm - 2584 Felsite Ave, Rosamond, CA
(Exceptions: June, September & December -
Location to be announced)

Memberships:

\$5 - Student & Military; \$15 - Individual; \$20 - Husband & Wife;
\$30 - Family; \$35 - Businesses

The Kern Antelope Historical Society was established in 1959 for the purpose of learning and preserving the history of California, especially the Antelope Valley, which includes parts of Los Angeles and Kern counties. Speakers are invited to talk at our monthly meetings about aspects of our various cultures. Subjects range from Indians of the past to the Space Age. The Society offers field trips for members to significant locations in and around the valley throughout the year. Come join us to learn more about the wonders of this area we live in and also meet some new people.

KERN ANTELOPE HISTORICAL SOCIETY

P.O. BOX 1255

ROSAMOND, CA 93560



Since