



# Antelope Horn

Newsletter of the Kern-Antelope Historical Society, Inc.  
Member of the Conference of California Historical Societies  
November, 2024

## Meetings:

### Regular Meetings:

- 2nd Thursday of the month (except July, August); 5:30 pm.
- Rosamond Public Library -  
3611 Rosamond Blvd, Rosamond, CA

### Board Meetings:

- 4th Thursday of the month as needed;  
4 pm; all are welcome, email for  
directions to location.

## Hello to all our Kern Antelope Historical Society Members and Friends.

- ❖ What: **Regular Meeting**
- ❖ When: **Thursday, November 14th (2nd Thursday)**
- ❖ Time: **5:30 pm**
- ❖ Where: **Rosamond Public Library**
- ❖ Speakers: **Jean Bacal, Jane Goodell & Trudy Stoermer**
- ❖ Topic: **THANKSGIVING TIME - Talk Turkey**

WEBSITE: [www.kahs1959.org](http://www.kahs1959.org) EMAIL: [info@kahs1959.org](mailto:info@kahs1959.org)  
FACEBOOK: [www.facebook.com/KAHS1959/](http://www.facebook.com/KAHS1959/)



*Happy Thanksgiving  
November 28, 2024*



*Jean (Epley) Bacal, Jane (Epley) Goodell  
and Trudy (Epley) Stoermer*

## THANKSGIVING TIME - Talk Turkey with Jean, Jane & Trudy

*We are looking forward to our next guests who grew up here in Rosamond, just a 'few' years ago. They were church- and schoolmates, horse-riding buddies, fellow 4-H members and, of course, long-time friends of my family. Here is what Trudy has to say about their presentation.*



*Walter Epley tending his turkeys*

*"Talk Turkey with the Epley sisters and be amused, educated and delighted by their roundtable banter relaying life on an Antelope Valley Turkey Ranch.*

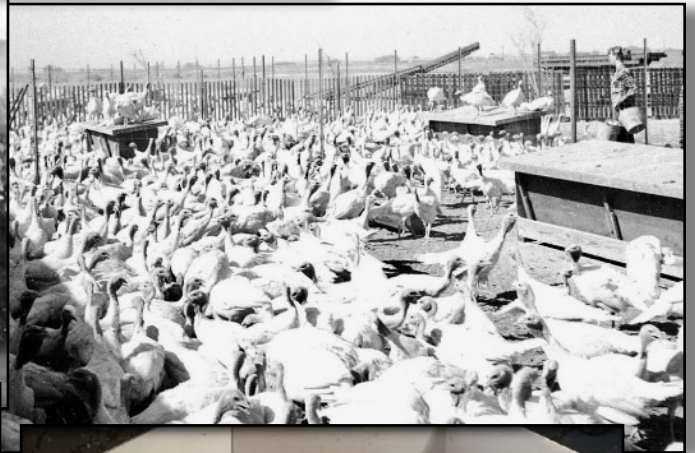
Jean (Epley) Bacal, Jane (Epley) Goodell and Trudy (Epley) Stoermer were raised on an Antelope Valley Turkey Ranch. These ladies will relate their experiences growing up in one of the main AV industries of the 40's, 50's & 60's.

They plan to share information about AV turkey ranching in general, their personal experiences (as only sisters can), a turkey trivia game with prizes and an audience round of Q & A's... There will also be a photo display and plenty of hugs."

Please notice: if you are receiving a hardcopy (black and white copy) of this newsletter and would like to enjoy it in color, it is available at our website: [www.kahs1959.org](http://www.kahs1959.org).



← A 'Bird's Eye View' of things



ABOVE—several views of the turkey ranch

Adult tom turkeys ready for market →



ABOVE— Young poults staying warm under the brooder.



← The Epley Family—Walter and Bobbie Epley and their five daughters



← One of the ranch trophy walls



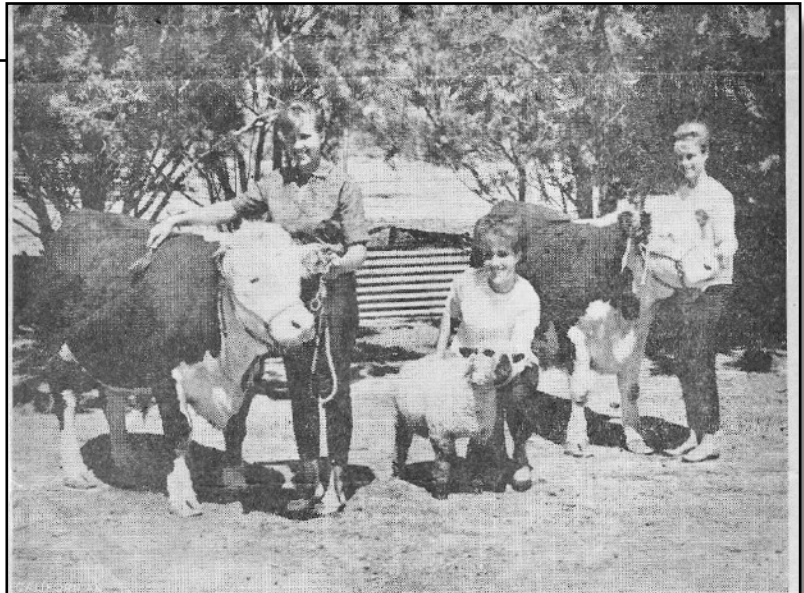
Please notice: if you are receiving a hardcopy (black and white copy) of this newsletter and would like to enjoy it in color, it is available at our website: [www.kahs1959.org](http://www.kahs1959.org).

At one time, raising poultry was big business in the Antelope Valley. There were chicken and turkey farms all over with their familiar poultry barns standing out. Here are just a few facts about the industry in the AV.

"Mrs. E. R. Alari . . . is one of hundreds of small independent farmers organized into a cooperative who make up part of the **\$10 million poultry industry** in the Antelope Valley," December 14, 1960 (<https://tessa2.lapl.org/digital/collection/photos/id/59938>)

Poultry raising was popular even earlier in the Antelope Valley. In *Antelope Valley News & Views during part of The Great Depression 1925 - 1935*, p.9, Grace Pickus quoted from a 1926 newspaper article, "Besides reporting on the growth and "sound footing" of the newly formed Kiwanis Club (33 members) three front page articles deal with the flourishing poultry industry". The Antelope Valley Commercial Egg and Poultry Club was to meet at the High School on Friday night; the club was formed to combine the buying power of the members and they had just ordered "two full car loads of feed." Lloyd Newell a progressive chicken raiser of the Tierra Bonita district [a district on the east side of Lancaster - jlw] had just received a shipment of fifteen hundred tiny baby chicks;" and much interest was being shown in the coming poultry show. "Dozens of chicken fanciers as well as owners of utility flocks have declared their intention of exhibiting birds and have applied for space."

One explanation for why the raising of poultry became so popular: "Improvements in transportation and freezing technology enabled a cottage industry to become a modern industry. In the early 1900s, farmers cannily shifted from charging a flat fee per bird to a per-pound model, and this made raising plumper birds more lucrative. With refrigerated railroad cars hauling frozen turkeys, the range of distribution expanded vastly. It took money to make these things happen, giving larger operations with more capital an advantage . . . One player in this history was my husband's grandfather, the late Victor Ryckebosch. A strategic thinker and inherent entrepreneur, as a young man Vic noticed that turkeys were a luxury item raised in small production. He seized the idea of breeding fleshier birds." (<https://modernfarmer.com/2014/11/turkeys-got-broad-white-breasts/>)



Trudy Epley of Rosamond carries "C. J. Hanes," a Hereford steer, while her sister, Jane, cares for a sheep called "The Masked Rider." A third sister, Jean, tends another Hereford, "Duke Dandy." The girls have entered the animals in the Antelope Valley Fair.

### Three Rosamond Sisters Groom Animals With Colorful Names

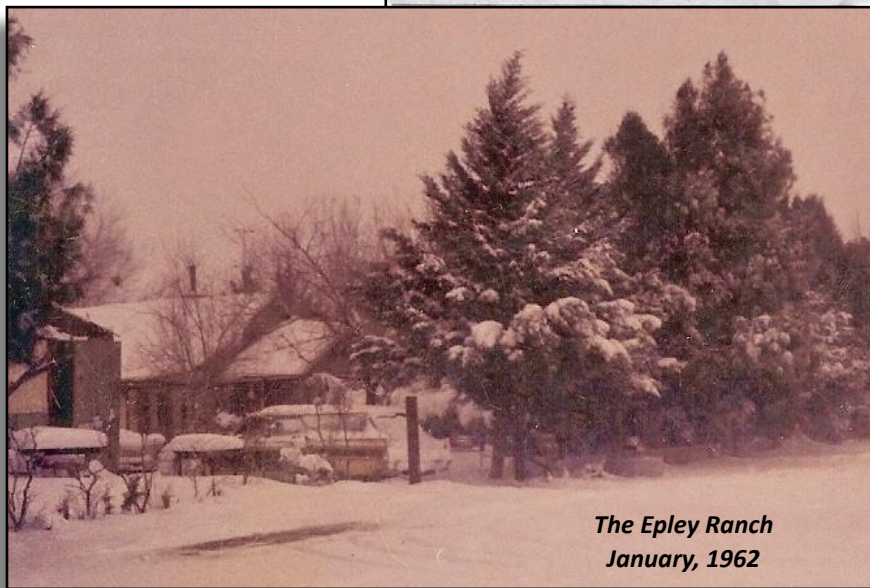
Californian News Service  
 ROSAMOND — "The Masked Rider," "Tuff Luck" and "Never Win" are the names of some of the animals entered in the Antelope Valley Fair and Alfalfa Festival by three Rosamond sisters. Daughters of Mr. and Mrs. Wal-

ter Epley, the teenagers are twins Jane and Jean, 15, and Trudy, 16. Jane has entered three sheep in the fair's 4-H livestock division, named "Outlaw," "The Masked Rider" and "Butcher Boy." She also has entered a cotton dress in the 4-H clothing division.

Jean entered "Too Bad," a Hampshire hog; "Champaign Girl," "Tuff Luck" and "Wonderful One," all cross-bred sheep; "Top Kick," a buckskin horse; "Duke Dandy," a Hereford steer, and "Katy's White Lady," a new Zealand white rabbit. In the baked goods division, she has entered drop cookies and quick coffee cake.

Trudy's entries include "Mr. JMP," a Hampshire hog; "C. J. Hanes," a Hereford steer, in the farmerette divisions; "Patches," pinto gelding, in the 4-H light horse division; "Bridget's Boy," Fluffy White," "Blue Jay's Miss" and "Never Win" in the 4-H rabbit division; "Howard 257," McFarland 68," "Tammy Lee" and "Poker Face" in the 4-H sheep division, and a brown gelding named "Jubilee" in the 4-H horse show. She will be represented in the 4-H baked goods division with muffins, quick coffee cake and drop cookies.

The sisters are veteran Antelope Valley exhibitors and blue ribbon winners.



The Epley Ranch  
 January, 1962

ABOVE—Although the girls had lots to do helping on the ranch, they also had time for other activities like

participating at the AV Fair.



Please notice: if you are receiving a hardcopy (black and white copy) of this newsletter and would like to enjoy it in color, it is available at our website: [www.kahs1959.org](http://www.kahs1959.org).

VETERANS DAY



HONORING ALL WHO SERVED



Remembering when "The Wall" came to Rosamond last November to honor those who lost their lives in Viet Nam.

**KAHS Annual Christmas Dinner & Meeting - December 12th - Diamond Jim's Casino**

Make your reservations at the November meeting for the annual Christmas Dinner and Meeting - Thursday, December 12th. We will be dining at Diamond Jim's Casino on 20th St., right here in Rosamond. The traditional turkey or ham dinner, with all the trimmings, including dessert, will be **\$30 per person**. The evening will also include our annual Christmas raffle. Many interesting items are donated by members and businesses and lots of excitement comes from trying to win your favorite item for yourself or maybe to use as a gift for that special someone on your list. It also generates money to help support the Kern Antelope Historical Society. If you have an item to donate for the raffle please let us know. (More details at the November meeting.) And remember to brush up on old 2024 newsletters for the competitive "Trivia Quiz".



Check out the KAHS videos which are available on YouTube. Or visit the website for more information about Antelope Valley history. Copies of recent newsletters are available, as well as other information. Follow us on Facebook for reminders about meetings and other items of historical interest. You can always contact us by email.

- ★ Website: [www.kahs1959.org](http://www.kahs1959.org)
- ★ Facebook: [www.facebook.com/KAHS1959/](http://www.facebook.com/KAHS1959/)
- ★ Email: [info@kahs1959.org](mailto:info@kahs1959.org)

- ★ KAHS YouTube Videos: <http://kahs1959.org/Videos/videos.html>



**Kern Antelope Historical Society - Membership Application**

Mail to: Kern Antelope Historical Society; PO Box 1255, Rosamond, CA 93560

	Membership Type	Dues	Amount Paid
Name _____	Student/Active Military	\$5	_____
Mail Address _____	Individual	\$15	_____
City, ST, Zip _____	Couple	\$20	_____
Phone _____	Family	\$30	_____
Email _____	Business	\$35	_____
Date _____			

**Note:** • Club Year is June 1st through May 31st of the following year; new members, paying after February 1st, pay only half.  
 • Zelle: [info@kahs1959.org](mailto:info@kahs1959.org) You may now use the following cell number for Zelle payments, also: (661) 609-8757.



Please notice: if you are receiving a hardcopy (black and white copy) of this newsletter and would like to enjoy it in color, it is available at our website: [www.kahs1959.org](http://www.kahs1959.org).

The Kern Antelope Historical Society greatly appreciates its business members. We hope you will support them and say thanks when you see them.

**THE TIRE STORE**  
 1816 Rosamond Blvd.  
 Rosamond, CA 93560  
 (661) 256-TIRE (8473)  
 Fax (661) 256-8476

PRICES ARE BORN HERE AND RAISED ELSEWHERE

DAVE BRAGG & NICK ROGHAIR  
 Owners  
 ESTEBAN MARAVILLAS  
 Manager

[www.tirestoreav.com](http://www.tirestoreav.com)

**TV LAND REAL ESTATE**

Terry V. Landsiedel  
 License # 01021751

phone: 661-256-8141  
 cell: 661-202-6444

PO Box 1467  
 Rosamond CA 93560

**Jeremy A. Woods, Ph.D.**  
 Associate Professor of Management  
 Management & Marketing  
 Faculty Director, Center for Entrepreneurship  
 & Innovation (CEI)

**School of Business and Public Administration**  
 California State University, Bakersfield  
 Mail Stop: 20 BDC | BDC-A 136  
 9001 Stockdale Highway  
 Bakersfield, CA 93311

661.654.3961  
 213.400.0829  
[jwoods7@csub.edu](mailto:jwoods7@csub.edu)  
[www.csub.edu/cei](http://www.csub.edu/cei)

**ONE SHOP**  
 MANY OPTIONS...

MARK PRESTON  
 661.755.6350  
[mpreston.bbapparel@gmail.com](mailto:mpreston.bbapparel@gmail.com)

- APPAREL, HATS & ACCESSORIES
- LOGO DESIGN & BRANDING
- EZ-UP SHELTERS, FLAGS & BANNERS
- EMBROIDERY, SCREEN PRINT & SUBLIMATION
- BUSINESS CARDS, FLYERS, SIGNAGE
- DECALS, PENS, MAGNETS, BAGS & MORE

CUSTOM DESIGNS  
 QUALITY PRODUCTS  
 COMPETITIVE PRICES

**Desert Breeze Enterprises**

Don and Chavonne Sladek  
 Owners/Hosts

tel. (661) 256-4409  
 Rosamond, CA 93560  
[dbe2016@icloud.com](mailto:dbe2016@icloud.com)

Contact us for help with business travel  
[www.airbnb.com/rooms/5571552](http://www.airbnb.com/rooms/5571552)

JOHN STICKEL

**Expert AUTOMOTIVE, INC.**

TAKE YOUR CAR TO THE EXPERTS

(661) 256-0405  
 FAX (661) 256-2060  
 2951 DIAMOND ST. ROSAMOND, CA 93560

**Do it Best** KARLS HARDWARE

2700 Diamond St.  
 Rosamond CA, 93560  
 Phone: (661) 256-3985  
 Fax: (661) 256-3932

Eric Landsgaard  
 President

[karlbest@sbcglobal.net](mailto:karlbest@sbcglobal.net)

**melchers construction** Lic. 955132

QUALITY CONSTRUCTION · REASONABLE RATES · SINCE 1984

**Gene R. Melchers**  
 General Contractor

2654 Diamond Street · PO Box 1468 · Rosamond, CA 93560  
[melchersconst@sbcglobal.net](mailto:melchersconst@sbcglobal.net)

661-810-0327 · [melchersconstruction.net](http://melchersconstruction.net)

**RAMON'S restaurant**  
 A taste of Mexico

GRACIAS  
 THE LOPEZ FAMILY

(661) 256-4602  
 1431 Rosamond Blvd Ste 9 & 10  
 Rosamond CA 93560

**ROBERTO'S MEXICAN FOOD**

~Wednesday~  
 Dinner Buffet from  
 4pm - 8pm

4401 Rosamond Blvd.  
 Suite 5 & 6  
 Rosamond, CA 93560

661.256.2607

**Rosamond Chamber of Commerce**

**Rosamond News**  
 Newspaper · Direct Mail · Web · Email · YouTube  
 27,000 people  
 93560

Since 1986  
 We go to everybody here

2696 Sierra Hwy · P.O. 848 · 93560

**SLADE COURT SERVICES**  
 Kem UDA 35 & PS 341

EVICIONS & SERVING  
 Get Rid of BAD Guys/Gals

15874 SIERRA HWY  
 MOJAVE, CA 93501  
 661-342-0213 Michele  
[prplnut@aol.com](mailto:prplnut@aol.com)  
 661-824-2578 Chris

## For Sale by KAHS

### Books - \$11 (\*\$8) Each:

*Here Roamed the Antelope*

*Bears - Borax and Gold*

*Along the Rails from Lancaster to Mojave*

*The Antelopes Left and the Settle-ers Came*

*In Love with Life in Lancaster (Hard Times  
1927-1932)*

*Antelope Valley Pioneers*

*Castles in the Valley - Shea's Castle*

*A Page in the History of Antelope Valley: the Arthur*

*Pickus Story: His Home for Seventy Five Years*

*Mojave, A Rich History of Rails, Mining and Flight*

*Gold-Fever - 40 Years Digging Antelope Valley History*

*Antelope Valley News and Views During Part of the  
Great Depression 1925-1935*

**Video DVD - \$15:** *Antelope Valley Yesteryears*

**Maps - \$4 (\*\$3):** *Historic Settlers Circle Map*

**Online Book:** *Glimpse of the Prehistory of Antelope Valley*

*\*Members' Discount Prices in Parentheses*

## 2024-2025

### Executive Board

#### Officers:

President: Gretchen Winfrey

winfrey3314@yahoo.com

Vice President: Delores Julian

ddjulirosa@yahoo.com

Secretary: Janet Winters

poppiesrme@gmail.com

Co-Treasurers: Char Taylor

Charlannegailtaylor@gmail.com

Lori Cruz

lpartoncruz@gmail.com

#### Directors At-Large:

Terry Landsiedel, Judy O'Loughlin & Chavonne Sladek

**WEBSITE:** [www.kahs1959.org](http://www.kahs1959.org) **EMAIL:** [info@kahs1959.org](mailto:info@kahs1959.org)

#### General Meetings:

Second Thursday of the Month, September through June

5:30 pm - 3611 Rosamond Blvd, Rosamond, CA

(Exceptions: June, September & December -

Location to be announced)

#### Memberships:

\$5 - Student & Active Military; \$15 - Individual;

\$20 - Husband & Wife; \$30 - Family; \$35 - Businesses

The Kern Antelope Historical Society was established in 1959 for the purpose of learning and preserving the history of California, especially the Antelope Valley, which includes parts of Los Angeles and Kern counties. Speakers are invited to talk at our monthly meetings about aspects of our various cultures. Subjects range from Indians of the past to the Space Age. Come join us to learn more about the wonders of this area we live in and also meet some new people.

### KERN ANTELOPE HISTORICAL SOCIETY

P.O. BOX 1255

ROSAMOND, CA 93560



Since 1959