



# Antelope Horn

Newsletter of the Kern-Antelope Historical Society, Inc.  
Member of the Conference of California Historical Societies  
February, 2025

## Meetings:

### Regular Meetings:

- 3rd Tuesday of the month (except July, August); 5:30 pm.
- Wayside Chapel Community Church - 2584 Felsite Ave, Rosamond, CA

### Board Meetings:

- 4th Thursday of the month as needed; 4 pm; all are welcome, email for directions to location.

## Hello to all our Kern Antelope Historical Society Members and Friends.

- ❖ What: **Regular Meeting**
  - ❖ When: **Tuesday, February 18th (3rd Tuesday)**
  - ❖ Time: **5:30 pm**
  - ❖ Where: **Wayside Chapel Community Church, Rosamond, CA**
  - ❖ Program: **Char Loomis Taylor & Jo Loomis Kenngott & the Loomis Family History**
- WEBSITE: [www.kahs1959.org](http://www.kahs1959.org) EMAIL: [info@kahs1959.org](mailto:info@kahs1959.org)  
FACEBOOK: [www.facebook.com/KAHS1959/](http://www.facebook.com/KAHS1959/)



Just a bit of Valentine trivia for you:

Do you know which two U.S. states officially achieved statehood on Feb. 14?

*Oregon (in 1859) and Arizona (in 1912)*

The Kern Antelope Historical Society is excited to present our own **KAHS members, sisters Char Loomis Taylor and Jo Loomis Kenngott, who will share about the Loomis family history in Rosamond.** Their family has been in Rosamond since the early 1900's and has been involved in many businesses and community activities. This will be a fun time of learning more of the Loomis family's story and their community involvement. Make plans to join us on **Tuesday, February 18th.**

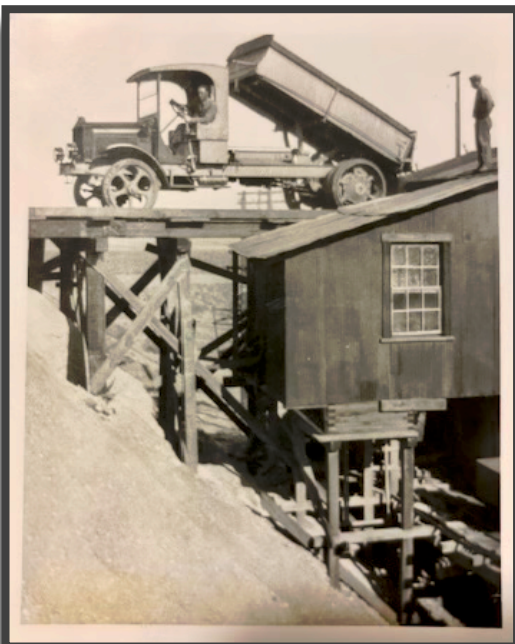
Pictured at right are the three Loomis sisters - Char Taylor, Mel Hensley and Jo Kenngott - in the R&J truck which has been in the family for years. Char and Jo will be presenting on the 18th.



## Loomis Family

The Loomis family has been in the community of Rosamond since the early 1900's. Many members of the Loomis family have been active in the community over the years. Char Loomis Taylor and Jo Loomis Kenngott, who are members of KAHS, will be sharing their family history which began with their great grandparents Luella and Winfield McNamee who moved to the Antelope Valley in 1918 and then moved to Rosamond in 1922. They managed the Rosamond Hotel and store for 4 years.

Thomas (Tommy) Loomis, grandfather to Char and Jo, delivered the first load of "custom ore" to the Tropic Gold Mine in 1924. (See photo at left.) That same year he opened a service station and mechanic shop on the corner of Highway 6 (which is now Sierra Hwy.) and Rosamond Blvd. known as "Tommy's Garage". (Photo next page.) This later became Rosamond Auto Parts and then R & J Auto Parts and was managed by Bob and Sue Loomis and then their son, Tommy Loomis.





Please notice: if you are receiving a hardcopy (black and white copy) of this newsletter and would like to enjoy it in color, it is available at our website: [www.kahs1959.org](http://www.kahs1959.org).

Tommy's Garage / R & J Auto Parts (photo at bottom of page) served the community of Rosamond for 82 years. Tommy was involved in the Rosamond Community Services District serving on their Board of Directors.

Thomas Loomis saw a need for a volunteer fire department and in 1938 built a hose cart which he manned alone at first. In 1942 a group of volunteer firemen was organized, and a county fire truck was added. This eventually became Kern County Fire Department Station 15.

Char Taylor along with her husband, Tom, and her sister and brother-in-Law Roger and Mel Hensley, owned and operated Fosters Freeze, a local iconic restaurant, from 1989 to 2022. They taught many a teenager a great work ethic and were generous in supporting local community events. In 2007 they built and opened Sister Sister Coffee House next door to Fosters Freeze.



Bob Loomis was Rosamond's first Honorary Mayor (photo at right) in 1967 and was instrumental in establishing Rosamond's first bank. He and his wife, Sue were also very involved in the VFW, the Rosamond Fairs, the Chamber of Commerce and the Women's Auxiliary.

Ruth Loomis Faires and her younger brothers, Charles, Roy and Bob, helped their father mix the adobe mortar that was used to build the first Wayside Chapel Church building on Diamond and Locust Street. The bell at Wayside Chapel was used to call many residents to help fight fires and was used as an air raid warning device during WWII. Luella McNamee, Jo and Char's great grandmother, turned the first shovel of dirt at the groundbreaking ceremony for the



new sanctuary to be built at the new location on Glendower Street. (photo at right.) The sanctuary was completed in 1965.



Roy Loomis owned and operated Roy's Mobile in the 60's and also had a welding shop here in Rosamond. Also, Luella McNamee ran a craft boutique on the corner of Diamond St. and Rosamond Blvd. and also owned the apartments behind the boutique. Being involved in the community was always important to the Loomis family and still is today.



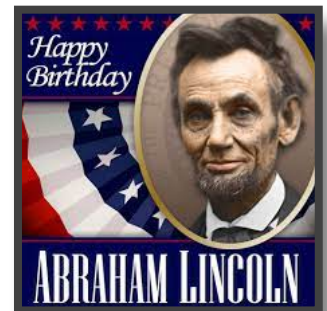
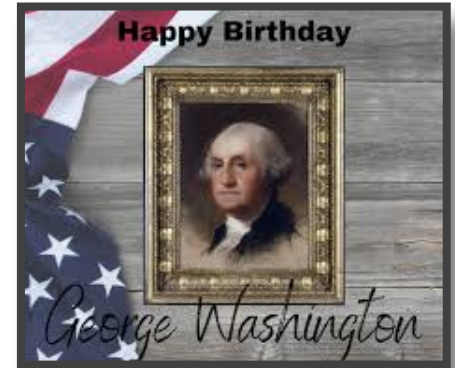
Please notice: if you are receiving a hardcopy (black and white copy) of this newsletter and would like to enjoy it in color, it is available at our website: [www.kahs1959.org](http://www.kahs1959.org).

**US Presidential Trivia Quiz:** From the Library of Congress comes this interesting quiz of presidential trivia. You may not be aware of these little-known facts but it's actually a chance to learn more about some of our leaders and events in history.

Answers are below, but to learn more, check out the webpage: <https://blogs.loc.gov/headlinesandheroes/2023/02/20-questions-u-s-presidential-trivia-quiz-round-2/>

Questions

- Which president served in Congress after his time in the White House and suffered a fatal stroke on the floor of the House Chamber?
- Which president was the first to be sworn in by his nickname?
- Perhaps due to chronic depression, this president is said to have slept up to 11 hours a day and always took an afternoon nap lasting at least 1-2 hours?
- Famed inventor Alexander Graham Bell tried to save the life of this president after he was shot by an assassin?
- According to his wishes, this president was buried wrapped in the American flag and his head rested on a copy of the U.S. Constitution?
- Which president worked to save football from being banned in the United States?
- Which president changed the name of the presidential mountain retreat Shangri-La to Camp David, after his grandson?
- Which president took the oath of office in his own home?
- Out of the five presidents to have worn a beard, this president is purported to have had the longest?
- Which president was a Rhodes Scholar?
- Mark Twain facilitated the publication of the autobiography of this president that was published the same year in the United States as *The Adventures of Huckleberry Finn*?
- Sixteen years after leaving office, this president was elected to serve in the Confederate House of Representatives?
- Who was the only man to be elected twice as U.S. Vice President and twice as President of the United States?
- Before Ronald Reagan, this president was the first to be featured in a dramatic film?
- Which president has long been labeled a self-proclaimed lover of pickles based on a quote falsely attributed to him?
- In 1934, the image of this president was printed on the \$100,000 bill, the highest denomination ever issued by the U.S. federal government?
- Nathaniel Hawthorne, author of *The Scarlet Letter* and other American classics, died while on a leisure trip to the White Mountains in New Hampshire with this president?
- Influenced by the 'Egyptomania' craze of the 1920s, this president named his pet King Tut?
- Which president, along with several members of his cabinet and a few congressmen, pitched in to put out a disastrous fire at the Library of Congress?
- One of America's most well known American poems by Walt Whitman begins:  
O Captain! My Captain! Our fearful trip is done;  
The ship has weathered every track  
The prize we sought is won.  
In this poem, Whitman's captain is which president? (see pg. 4 the read the whole poem.)



Answers:

- |                      |                         |                      |                      |
|----------------------|-------------------------|----------------------|----------------------|
| 1. John Quincy Adams | 6. Theodore Roosevelt   | 11. Ulysses S. Grant | 16. Woodrow Wilson   |
| 2. Jimmy Carter      | 7. Dwight D. Eisenhower | 12. John Tyler       | 17. Franklin Pierce  |
| 3. Calvin Coolidge   | 8. Chester A. Arthur    | 13. Richard Nixon    | 18. Herbert Hoover   |
| 4. James A. Garfield | 9. Rutherford B. Hayes  | 14. Grover Cleveland | 19. Millard Fillmore |
| 5. Andrew Johnson    | 10. Bill Clinton        | 15. Thomas Jefferson | 20. Abraham Lincoln  |

What president had a Belgian Malinois back in the 1920's? Have you ever seen a \$100,000 dollar bill? Do you know what is located in the Catskill Mountains, related to the presidents? In 1904 there were 18 fatalities reported in what sport? Why couldn't Alexander Graham Bell find the bullet in the wounded president with his metal detector? You can learn the answers to these questions and more by clicking on the link above and reading the complete answers to the trivia questions.

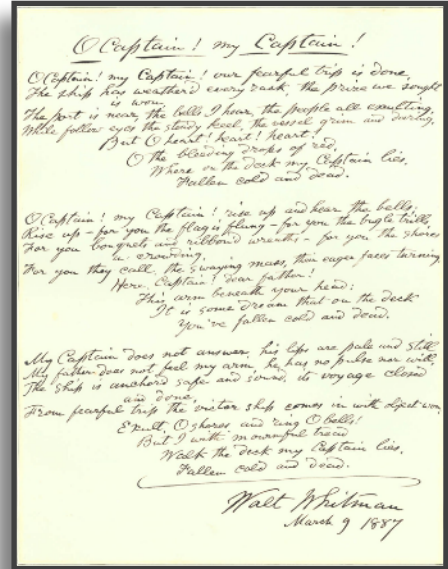


Please notice: if you are receiving a hardcopy (black and white copy) of this newsletter and would like to enjoy it in color, it is available at our website: www.kahs1959.org.

O Captain! My Captain! our fearful trip is done;
The ship has weather'd every rack, the prize we sought is won;
The port is near, the bells I hear, the people all exulting,
While follow eyes the steady keel, the vessel grim and daring:
But O heart! heart! heart!
O the bleeding drops of red,
Where on the deck my Captain lies,
Fallen cold and dead.

O Captain! My Captain! rise up and hear the bells;
Rise up—for you the flag is flung—for you the bugle trills;
For you bouquets and ribbon'd wreaths—for you the shores a-crowding;
For you they call, the swaying mass, their eager faces turning;
Here captain! dear father!
This arm beneath your head;
It is some dream that on the deck,
You've fallen cold and dead.

My Captain does not answer, his lips are pale and still;
My father does not feel my arm, he has no pulse nor will;
The ship is anchor'd safe and sound, its voyage closed and done;
From fearful trip, the victor ship, comes in with object won;
Exult, O shores, and ring, O bells!
But I, with mournful tread,
Walk the deck my captain lies,
Fallen cold and dead.



ABOVE—Autographed copy of Walt Whitman's poem—signed and dated March 9, 1887—as published in 1881.

LEFT— poem written by Walt Whitman in 1865 about the death of U.S. president Abraham Lincoln. (https://en.wikipedia.org/wiki/O\_Captain!\_My\_Captain!)



Check out the KAHS videos which are available on YouTube. Or visit the website for more information about Antelope Valley history. Copies of recent newsletters are available, as well as other information. Follow us on Facebook for reminders about meetings and other items of historical interest. You can always contact us by email.

- ★ Website: www.kahs1959.org
★ Facebook: www.facebook.com/KAHS1959/
★ Email: info@kahs1959.org

- ★ KAHS YouTube Videos: http://kahs1959.org/Videos/videos.html



Kern Antelope Historical Society - Membership Application

Mail to: Kern Antelope Historical Society; PO Box 1255, Rosamond, CA 93560

Table with columns: Name, Mail Address, City, ST, Zip, Phone, Email, Date, Membership Type, Dues, Amount Paid. Rows include Student/Active Military, Individual, Couple, Family, Business.

Note: • Club Year is June 1st through May 31st of the following year; new members, paying after February 1st, pay only half.
• Zelle: info@kahs1959.org You may now use the following cell number for Zelle payments, also: (661) 609-8757.



Please notice: if you are receiving a hardcopy (black and white copy) of this newsletter and would like to enjoy it in color, it is available at our website: [www.kahs1959.org](http://www.kahs1959.org).

The Kern Antelope Historical Society greatly appreciates its business members. We hope you will support them and say thanks when you see them.

**THE TIRE STORE**  
 1816 Rosamond Blvd.  
 Rosamond, CA 93560  
 (661) 256-TIRE (8473)  
 Fax (661) 256-8476

PRICES ARE BORN HERE AND RAISED ELSEWHERE

DAVE BRAGG & NICK ROGHAIR  
 Owners  
 ESTEBAN MARAVILLAS  
 Manager

[www.tirestoreav.com](http://www.tirestoreav.com)

**TV LAND REAL ESTATE**

Terry V. Landsiedel  
 License # 01021751

phone: 661-256-8141  
 cell: 661-202-6444

PO Box 1467  
 Rosamond CA 93560

**Jeremy A. Woods, Ph.D.**  
 Associate Professor of Management  
 Management & Marketing  
 Faculty Director, Center for Entrepreneurship  
 & Innovation (CEI)

**School of Business and Public Administration**  
 California State University, Bakersfield  
 Mail Stop: 20 BDC | BDC-A 136  
 9001 Stockdale Highway  
 Bakersfield, CA 93311

661.654.3961  
 213.400.0829  
[jwoods7@csub.edu](mailto:jwoods7@csub.edu)  
[www.csub.edu/cei](http://www.csub.edu/cei)

**Barbones Print Shop Apparel**

**ONE SHOP**  
 MANY OPTIONS...

MARK PRESTON  
 661.755.6350  
[mpreston.bbapparel@gmail.com](mailto:mpreston.bbapparel@gmail.com)

- APPAREL, HATS & ACCESSORIES
- LOGO DESIGN & BRANDING
- EZ-UP SHELTERS, FLAGS & BANNERS
- EMBROIDERY, SCREEN PRINT & SUBLIMATION
- BUSINESS CARDS, FLYERS, SIGNAGE
- DECALS, PENS, MAGNETS, BAGS & MORE

CUSTOM DESIGNS  
 QUALITY PRODUCTS  
 COMPETITIVE PRICES

**Desert Breeze Enterprises**

Don and Chavonne Sladek  
 Owners/Hosts

tel. (661) 256-4409  
 Rosamond, CA 93560  
[dbe2016@icloud.com](mailto:dbe2016@icloud.com)

Contact us for help with business travel  
[www.airbnb.com/rooms/5571552](http://www.airbnb.com/rooms/5571552)

JOHN STICKEL

**Expert AUTOMOTIVE, INC.**

TAKE YOUR CAR TO THE EXPERTS

(661) 256-0405  
 FAX (661) 256-2060  
 2951 DIAMOND ST. ROSAMOND, CA 93560

**Do it Best** KARLS HARDWARE

2700 Diamond St.  
 Rosamond CA, 93560  
 Phone: (661) 256-3985  
 Fax: (661) 256-3932

Eric Landsgaard  
 President

[karlbest@sbcglobal.net](mailto:karlbest@sbcglobal.net)

**melchers construction** Lic. 955132

QUALITY CONSTRUCTION · REASONABLE RATES · SINCE 1984

**Gene R. Melchers**  
 General Contractor

2654 Diamond Street · PO Box 1468 · Rosamond, CA 93560  
[melchersconst@sbcglobal.net](mailto:melchersconst@sbcglobal.net)

661-810-0327 · [melchersconstruction.net](http://melchersconstruction.net)

**RAMON'S restaurant**  
 A taste of Mexico

GRACIAS  
 THE LOPEZ FAMILY

(661) 256-4602  
 1431 Rosamond Blvd Ste 9 & 10  
 Rosamond CA 93560

**HYDROSTOR**

ADVANCED COMPRESSED AIR ENERGY STORAGE

**ROBERTO'S MEXICAN FOOD**

~Wednesday~  
 Dinner Buffet from  
 4pm - 8pm

4401 Rosamond Blvd.  
 Suite 5 & 6  
 Rosamond, CA 93560

661.256.2607

**Rosamond Chamber of Commerce**

**Rosamond News**  
 Newspaper · Direct Mail · Web · Email · YouTube

27,000 people  
 93560

Since 1986

We go to everybody here

2696 Sierra Hwy · P.O. 848 · 93560

**SLADE COURT SERVICES**  
 Kern UDA 35 & PS 341

EVICIONS & SERVING  
 Get Rid of BAD Guys/Gals

15874 SIERRA HWY  
 MOJAVE, CA 93501  
 661-342-0213 Michele  
[prplnut@aol.com](mailto:prplnut@aol.com)  
 661-824-2578 Chris

## For Sale by KAHS

### **Books - \$11 (\*\$8) Each:**

*Here Roamed the Antelope*

*Bears - Borax and Gold*

*Along the Rails from Lancaster to Mojave*

*The Antelopes Left and the Settle-ers Came*

*In Love with Life in Lancaster (Hard Times  
1927-1932)*

*Antelope Valley Pioneers*

*Castles in the Valley - Shea's Castle*

*A Page in the History of Antelope Valley: the Arthur*

*Pickus Story: His Home for Seventy Five Years*

*Mojave, A Rich History of Rails, Mining and Flight*

*Gold-Fever - 40 Years Digging Antelope Valley History*

*Antelope Valley News and Views During Part of the  
Great Depression 1925-1935*

**Video DVD - \$15:** *Antelope Valley Yesteryears*

**Maps - \$4 (\*\$3):** *Historic Settlers Circle Map*

**Online Book:** *Glimpse of the Prehistory of Antelope Valley*

*\*Members' Discount Prices in Parentheses*

## 2024-2025

### **Executive Board**

#### **Officers:**

President: Gretchen Winfrey

winfrey3314@yahoo.com

Vice President: Delores Julian

ddjulirosa@yahoo.com

Secretary: Janet Winters

poppiesrme@gmail.com

Co-Treasurers: Char Taylor

Charlannegailtaylor@gmail.com

Lori Cruz

lpartoncruz@gmail.com

#### **Directors At-Large:**

Terry Landsiedel, Judy O'Loughlin & Chavonne Sladek

**WEBSITE:** [www.kahs1959.org](http://www.kahs1959.org) **EMAIL:** [info@kahs1959.org](mailto:info@kahs1959.org)

#### **General Meetings:**

Third Tuesday of the Month, September through June

5:30 pm - 2584 Felsite Ave, Rosamond, CA

(Exceptions: June, September & December -

Location to be announced)

#### **Memberships:**

\$5 - Student & Active Military; \$15 - Individual;

\$20 - Husband & Wife; \$30 - Family; \$35 - Businesses

The Kern Antelope Historical Society was established in 1959 for the purpose of learning and preserving the history of California, especially the Antelope Valley, which includes parts of Los Angeles and Kern counties. Speakers are invited to talk at our monthly meetings about aspects of our various cultures. Subjects range from Indians of the past to the Space Age. Come join us to learn more about the wonders of this area we live in and also meet some new people.

## KERN ANTELOPE HISTORICAL SOCIETY

P.O. BOX 1255

ROSAMOND, CA 93560



Since 1959